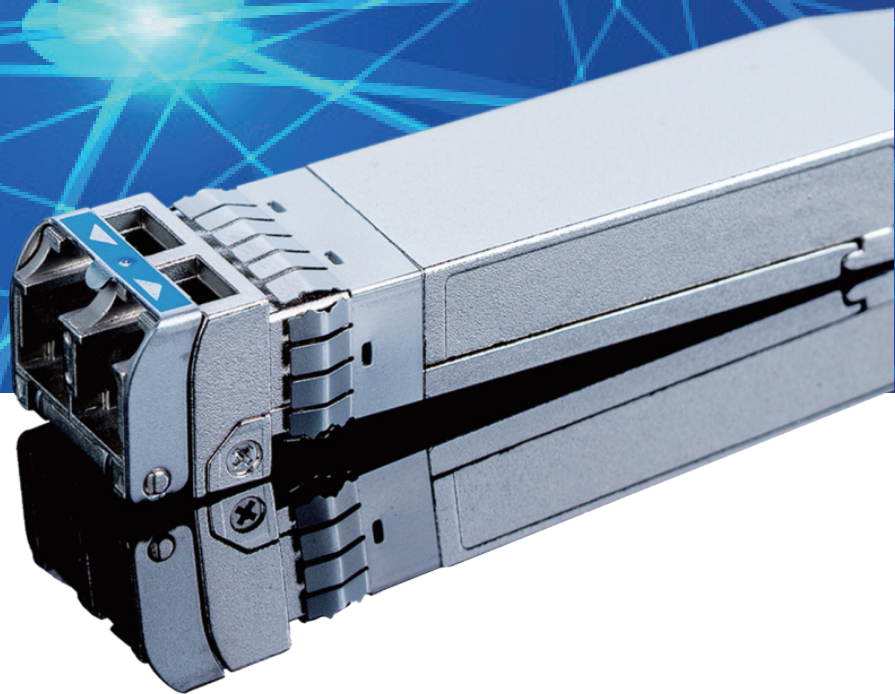


Professional Fiber Optical Products Supplier

from Taiwan

Transceiver
Equipment
Cable
Passive Component



Ficer Technology Co. Ltd

- Link Fiber with Ficer -



About Us

Ficer Technology Co., Ltd., established in 2005, is a professional Fiber Optical Component and Equipment supplier in Taipei, Taiwan.

Our comprehensive Fiber Optical product lines include :

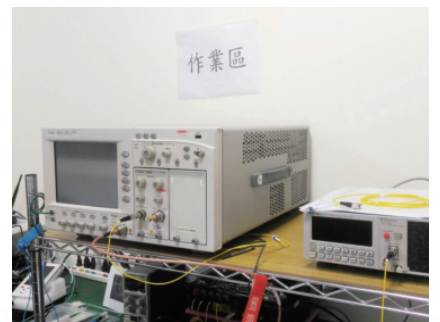
1. **Transceiver** : various Form Factor Transceiver modules with 1bps ~ 400Gbps data rate.
2. **Equipment** : OTN DWDM Transmission Platform (EDFA, Transponder, Muxponder, OLP, RPU, SOA, FEC, DCM), Media Converter, Industrial Fiber Switch.
3. **Cable** : DAC, AOC, Fiber Patch-cord, MPO Patch-cord, Distribution Cable, Armored Cable, Waterproof Cable, Military Tactical Cable.
4. **Passive component** : QAC, CWDM, DWDM Mux/Demux, OADM, Splitter, Attenuator, Adaptor, Clean tool.

Ficer Technology always stays abreast with trends and has consistently rigorous requirement for quality and service. We are committed to deliver the right and rapid solutions to fulfill customer's needs and success. So our customers could focus on their core business and take market easily. As a result, Ficer Technology is the best partner supporting customers to be the winner in the market.

For more information, please visit our websites:

www.Ficer.com

Ficer.en.taiwantrade.com



CE



FCC



ISO9001



RoHS



TUV



UL

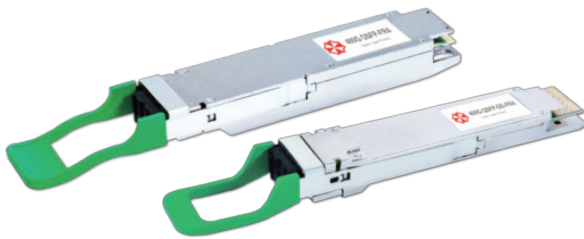
200G/400G Series



400G OSFP-SR8
200G/400G QSFP-DD-SR8

Features

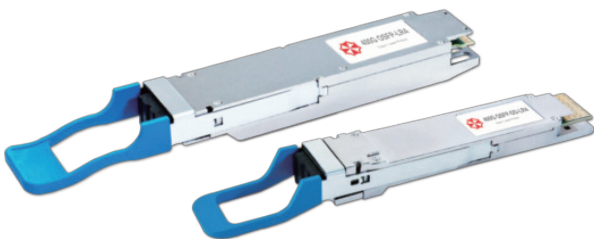
- Transmission 70m on OM3 / 100m on OM4 MMF
- 850nm VCSEL transmitter / PIN receiver
- MPO-16 Receptacle, 8 Tx and 8 Rx Lanes
- 2x100GBASE-SR4 / 400GBASE-SR8 Ethernet



400G OSFP-FR4
400G QSFP-DD-FR4

Features

- Transmission 2km on SMF
- CWDM4 EML transmitter / PIN receiver
- Dual LC Receptacle
- 400GBASE-FR4 Ethernet



400G OSFP-LR4
400G QSFP-DD-LR4

Features

- Transmission 10km on SMF
- CWDM4 EML transmitter / PIN receiver
- Dual LC Receptacle
- 400GBASE-LR4 Ethernet



400G OSFP AOC
200G/400G QSFP-DD AOC

Features

- Cable length up to 70m with OM3 / 100m with OM4 MMF
- 850nm VCSEL transmitter / PIN receiver
- 8 Tx and 8 Rx Lanes
- 2x100GBASE-SR4 / 400GBASE-SR8 Ethernet

Fiber Optical Transceiver



100G CFP LR4

Features

- Compliant with IEEE802.3ba 100GBASE-LR4 and OTN OTU4
- Compliant with CFP MSA and CAUI 100GE
- 4CH LWDM MUX / DEMUX design
- Aggregate Data Rate 103.1 / 111.8Gbps
- Built in quad TX CDR and RX CDR
- O-Band LWDM EML / DFB transmitter + PIN receiver
- Duplex LC connector
- Link distance 10km over SM fiber



100G CFP ER4

Features

- Compliant with IEEE802.3ba 100GBASE-ER4 and OTN OTU4
- Compliant with CFP MSA and CAUI 100GE
- 4CH LWDM MUX / DEMUX design
- Aggregate Data Rate 103.1 / 111.8Gbps
- Built in quad TX CDR and RX CDR
- O-Band LWDM EML transmitter + APD receiver
- Duplex LC connector
- Link distance 40km over SM fiber



100G CFP-DCO

Features

- Compliant with CFP MSA, CAUI 100GE and OTL4.10 for OTU4 host interface
- Supports Coherent optical transmission DP-DQPSK (100G)
- 98CH DWDM 50GHz Tunable in the range of THz191.25 (H12) to THz196.10 (C61)
- Data Rate 103.1 / 111.8Gbps
- CFP class 4 (MAX Power Consumption 32W)
- NDSF reach distance 1200km without in-line Dispersion Compensation (with OA)



100G CFP2 LR4

Features

- Compliant with IEEE802.3ba 100GBASE-LR4 and OTN OTU4
- Compliant with CFP2 MSA and CAUI 100GE
- 4CH LWDM MUX / DEMUX design
- Aggregate Data Rate 103.1 / 111.8Gbps
- Built in quad TX CDR and RX CDR
- O-Band LWDM EML / DFB transmitter + PIN receiver
- Duplex LC connector
- Link distance 10km over SM fiber



100G CFP2 ER4

Features

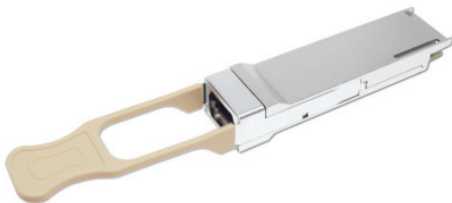
- Compliant with IEEE802.3ba 100GBASE-ER4 and OTN OTU4
- Compliant with CFP2 MSA and CAUI 100GE
- 4CH LWDM MUX / DEMUX design
- Aggregate Data Rate 103.1 / 111.8Gbps
- Built-in quad TX CDR and RX CDR
- O-Band LWDM EML transmitter + APD receiver
- Duplex LC connector
- Link distance 40km over SM fiber



100G CFP2-DCO

Features

- Compliant with CFP2 MSA, CAUI 100GE and OTL4.10 for OTU4 host interface
- Supports Coherent optical transmission DP-DQPSK (100G), DP-8QAM (200G) and DP-16QAM (200G)
- 98CH DWDM 50GHz Tunable in the range of THz191.25 (H12) to THz196.10 (C61)
- Data Rate 103.1G (100GE) / 111.8G (OTU4) / 200G (OTUC2)
- MAX Power Consumption 20.5W
- NDSF reach distance 500km without in-line Dispersion Compensation (with OA)



100G QSFP28 SR4 / eSR4

Features

- Compliant with IEEE802.3ba 100GBASE-SR4 and OTN OTU4
- 4 independent parallel fiber full-duplex channels
- Aggregate Data Rate 103.1 / 111.8Gbps
- Built-in quad TX CDR and RX CDR
- 4CH 850nm VCSEL transmitter + PIN receiver
- MPO-12 receptacle connector
- Link distance 70m(SR4) / 150m(eSR4) over MM OM3 fiber
- Link distance 100m(SR4) / 300m(eSR4) over MM OM4 fiber



100G QSFP28 SRBD

Features

- Compliant with 100GBASE-SR2-BiDi
- PAM4 2CH 50Gbps bidirectional optics design
- Operate at 25.78125Gbps per electrical channel
- 850 / 900nm VCSEL transmitter + PIN receiver
- Dual Bidi LC connector
- Link distance 70m over MM OM3 fiber / 100m over MM OM4 fiber / 150m over MM OM5 fiber

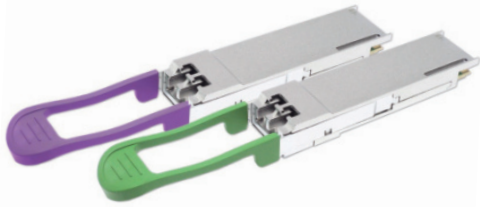


100G QSFP28 PSM4

Features

- Compliant with 100GBASE-PSM4
- 4 independent parallel fiber full-duplex channels
- Aggregate Data Rate 103.1Gbps
- Built-in quad TX CDR and RX CDR
- 4CH 1310nm DFB transmitter + PIN receiver
- MPO-12 receptacle connector
- Link distance 2km over SM fiber

Fiber Optical Transceiver



100G QSFP28 CWDM4 /
eCWDM4 (4WDM-10)

Features

- Compliant with 100GBASE-CWDM4 / eCWDM4 (4WDM-10)
- 4CH CWDM MUX / DEMUX design
- Aggregate Data Rate 103.1Gbps
- Built-in quad TX CDR and RX CDR
- CWDM DFB transmitter + PIN receiver
- Duplex LC connector
- Link distance 500m, 2km, 10km over SM fiber with KR4 FEC



100G QSFP28 BIDI 4WDM-20

Features

- Compliant with 100G 4WDM-20 MSA
- 8CH LWDM MUX / DEMUX design
- Aggregate Data Rate 103.1Gbps
- Built-in quad TX CDR and RX CDR
- O-Band LWDM DFB transmitter + PIN receiver
- Simplex(Bidi) LC connector
- Link distance 20km over SM fiber with RS-FEC



100G QSFP28 Single Lambda
DR1 / FR1 / LR1

Features

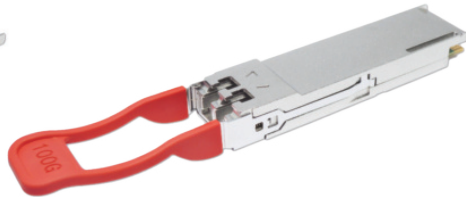
- Compliant with IEEE802.3cd 100GBASE-DR1 and 802.3cu 100GBASE-FR1 / LR1
- Optical Data Rate 53.125GBd with PAM4
- Electrical Data Rate 4x25Gbps with NRZ
- Built-in quad TX CDR and RX CDR
- Single Lambda 1311nm EML transmitter + PIN receiver
- Duplex LC connector
- Link distance 500m / 2km / 10km over SM fiber with FEC



100G QSFP28 LR4

Features

- Compliant with IEEE802.3ba 100GBASE-LR4 and OTN OTU4
- 4CH LWDM MUX / DEMUX design
- Aggregate Data Rate 103.1 / 111.8Gbps
- Built-in quad TX CDR and RX CDR
- O-Band LWDM DFB transmitter + PIN receiver
- Duplex LC connector
- Link distance 10km over SM fiber



100G QSFP28 ER4

Features

- Compliant with IEEE802.3ba 100GBASE-ER4
- 4CH LWDM MUX / DEMUX design
- Aggregate Data Rate 103.1Gbps
- Built-in quad TX CDR and RX CDR
- O-Band LWDM DFB transmitter + APD receiver
- Duplex LC connector
- Link distance 40km over SM fiber



100G QSFP28 ZR4

Features

- Compatible with IEEE802.3ba 100GBASE-ER4
- 4CH LWDM MUX / DEMUX design
- Aggregate Data Rate 103.1Gbps
- Built-in quad TX CDR and RX CDR
- O-Band LWDM EML transmitter + APD receiver
- Duplex LC connector
- Link distance 60km(without FEC) / 80km(with FEC) over SM fiber



40G QSFP+ SR4 / eSR4

Features

- Compliant with IEEE802.3ba 40GBASE-SR4
- 4 independent parallel fiber full-duplex lanes
- Up to 10.3125Gbps data rate per lane
- 850nm VCSEL transmitter + PIN receiver
- MPO-12 receptacle connector
- Link distance 100m(SR4) / 300m(eSR4) over MM OM3 fiber
- Link distance 150m(SR4) / 400m(eSR4) over MM OM4 fiber



40G QSFP+ SRBD

Features

- Compliant with 40GBASE-SR2-BiDi
- 2CH 21Gbps bidirectional optics design
- Operate at 10.3125Gbps per electrical channel
- 850 / 900nm VCSEL transmitter + PIN receiver
- Dual Bidi LC connector
- Link distance 100m over MM OM3 fiber / 150m over MM OM4 fiber



40G QSFP+ PSM4-IR4 / LR4

Features

- Compatible with IEEE802.3ba 40GBASE-LR4
- 4 independent parallel fiber full-duplex channels
- Up to 11.2Gbps data rate per lane
- 1310nm DFB transmitter + PIN receiver
- MPO-12 receptacle connector
- Link distance 2km(IR4) / 10km(LR4) over SM fiber

Fiber Optical Transceiver



40G QSFP+ LX4 / LM4

Features

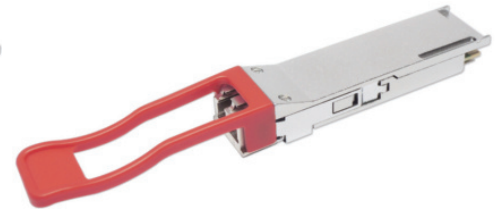
- Compliant with 40GBASE-LX4 / LM4
- 4CH CWDM MUX / DEMUX design
- Up to 11.2Gbps data rate per lane
- 1270~1330nm CWDM DFB transmitter + PIN receiver
- Duplex LC connector
- Link distance 2km over SM fiber / 150m over MM OM3 fiber



40G QSFP+ IR4 / LR4

Features

- Compliant with IEEE802.3ba 40GBASE-LR4
- 4CH CWDM MUX / DEMUX design
- Up to 11.2Gbps data rate per lane
- 1270~1330nm CWDM DFB transmitter + PIN receiver
- Duplex LC connector
- Link distance 2km(IR4) / 10km(LR4) over SM fiber



40G QSFP+ ER4

Features

- Compliant with IEEE802.3bm 40GBASE-ER4
- 4CH CWDM MUX / DEMUX design
- Up to 11.2Gbps data rate per lane
- 1270~1330nm CWDM DFB transmitter + APD receiver
- Duplex LC connector
- Link distance 40km over SM fiber



25G SFP28 SR / eSR

Features

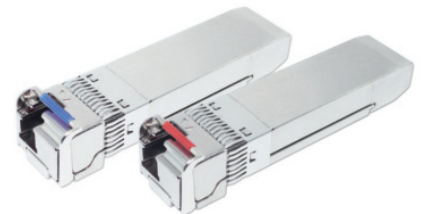
- Compliant with CPRI Option #10 24.33Gbps and IEEE802.3by 25GBASE-SR Ethernet 25.78Gbps
- Built-in TX CDR and RX CDR
- 850nm VCSEL transmitter + PIN receiver
- Duplex LC connector
- Link distance 70m(SR) / 200m(eSR) over MM OM3 fiber
- Link distance 100m(SR) / 300m(eSR) over MM OM4 fiber



25G SFP28 LRL / LR / LR20

Features

- Compliant with CPRI Option #10 24.33Gbps and IEEE802.3cc 25GBASE-LR Ethernet 25.78Gbps
- Built-in TX CDR and RX CDR
- 1310nm DFB transmitter + PIN receiver
- Duplex LC connector
- Link distance 300m(LRL) / 10km(LR) / 20km(LR20) over SM fiber



25G SFP28 BX 10km

Features

- Compatible with CPRI Option #10 24.33Gbps and IEEE802.3cc 25GBASE-LR Ethernet 25.78Gbps
- Built-in TX CDR and RX CDR
- 1270 / 1330nm DFB transmitter + PIN receiver
- Simplex(Bidi) LC connector
- Link distance 10km over SM fiber



25G SFP28 CWDM 10km

Features

- Compatible with CPRI Option #10 24.33Gbps and IEEE802.3cc 25GBASE-LR Ethernet 25.78Gbps
- Built-in TX CDR and RX CDR
- 1270 ~ 1370nm CWDM DFB transmitter + PIN receiver
- Duplex LC connector
- Link distance 10km over SM fiber



25G SFP28 DWDM 10km

Features

- Compatible with CPRI Option #10 24.33Gbps and IEEE802.3cc 25GBASE-LR Ethernet 25.78Gbps
- Built-in TX CDR and RX CDR
- 100GHz ITU Grid, C-Band DWDM EML transmitter + PIN receiver
- Duplex LC connector
- Link distance 10km over SM fiber

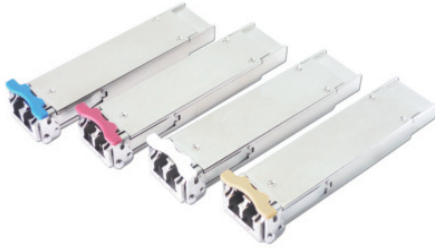


25G SFP28 LWDM 40km

Features

- Compliant with CPRI Option #10 24.33Gbps and IEEE802.3cc 25GBASE-ER Ethernet 25.78Gbps
- Built-in TX CDR and RX CDR
- O-Band LWDM EML transmitter + APD receiver
- Duplex LC connector
- Link distance 30km(without FEC) / 40km(with FEC) over SM fiber

Fiber Optical Transceiver



10G XFP SR / LR / ER / ZR / ZR100

Features

- Compliant with IEEE802.3ae 10GBASE-SR/ LR/ER/ZR, SONET OC192, SDH STM64 and CPRI Option #8
- Support 9.953Gb/s to 11.32Gb/s Multi-Rate
- 850nm VCSEL / 1310nm DFB / 1550nm EML transmitter + PIN / APD receiver
- Duplex LC connector
- Link distance 300m(SR) over MM OM3 fiber, 10km(LR) / 40km(ER) / 80km(ZR) / 100km(ZR100) over SM fiber



10G XFP CWDM

Features

- Compliant with IEEE802.3ae 10GBASE-LR/ ER/ZR, SONET OC192, SDH STM64 and CPRI Option #8
- Support 9.953Gb/s to 11.32Gb/s Multi-Rate
- 1270~1610nm CWDM DFB / 1470~1610nm CWDM EML transmitter + PIN / APD receiver
- Duplex LC connector
- CWDM Link distance 5~100km over SM fiber



10G XFP DWDM

Features

- Compliant with IEEE802.3ae 10GBASE-ER/ ZR, SONET OC192, SDH STM64 and CPRI Option #8
- Support 9.953Gb/s to 11.32Gb/s Multi-Rate
- 50GHz / 100GHz ITU Grid, C-Band DWDM EML transmitter + PIN / APD receiver
- Duplex LC connector
- DWDM Link distance 40~100km over SM fiber



10G XFP BX 20/40/60/80km

Features

- Compliant with 10GBASE-BX, SONET OC192, SDH STM64 and CPRI Option #8
- Support 9.953Gb/s to 11.32Gb/s Multi-Rate
- 1270 / 1330nm CWDM DFB transmitter + PIN(10km~40km) / APD(60km) receiver
- 1490 / 1550nm CWDM EML transmitter + APD receiver for 80km
- Simplex(Bidi) LC connector
- Link distance 20~80km over SM fiber



10G SFP+ SR / LR / ER / ZR / ZR100

Features

- Compliant with IEEE802.3ae 10GBASE-SR/ LR/ER/ZR, SONET OC192, SDH STM64 and CPRI Option #7, #8
- Support 1.0625Gbps to 11.32Gbps Multi-Rate
- 850nm VCSEL / 1310nm DFB / 1550nm EML transmitter + PIN / APD receiver
- Duplex LC connector
- Link distance 300m(SR) over MM OM3 fiber, 10km(LR) / 40km(ER) / 80km(ZR) / 100km(ZR100) over SM fiber



10G SFP+ BX 20/40/60/80/100km

Features

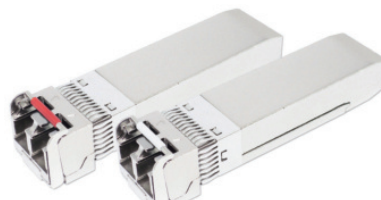
- Compliant with 10GBASE-BX, SONET OC192, SDH STM64 and CPRI Option #7, #8
- Support 1.0625Gbps to 11.32Gbps Multi-Rate
- 1270 / 1330nm CWDM DFB transmitter + PIN(10km~40km) / APD(60km) receiver
- 1490 / 1550nm CWDM EML transmitter + APD receiver for 80/100km
- Simplex(Bidi) LC connector
- Link distance 20~100km over SM fiber



10G SFP+ CWDM

Features

- Compliant with IEEE802.3ae 10GBASE-LR/ ER/ZR, SONET OC192, SDH STM64 and CPRI Option #7, #8
- Support 1.0625Gbps to 11.32Gbps Multi-Rate
- 1270~1610nm CWDM DFB / 1470~1610nm CWDM EML transmitter + PIN / APD receiver
- Duplex LC connector
- CWDM Link distance 5~100km over SM fiber



10G SFP+ DWDM

Features

- Compliant with IEEE802.3ae 10GBASE-ER/ ZR, SONET OC192, SDH STM64 and CPRI Option #7, #8
- Support 1.0625Gbps to 11.32Gbps Multi-Rate
- 50GHz / 100GHz ITU Grid, C-Band DWDM EML transmitter + PIN / APD receiver
- Duplex LC connector
- DWDM Link distance 40~100km over SM fiber

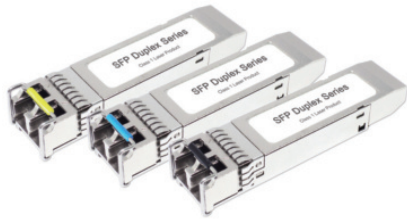


10G SFP+ DWDM Tunable 80km

Features

- Compliant with IEEE802.3ae 10GBASE-ZR, SONET OC192, SDH STM64 and CPRI Option #7, #8
- Support 9.953Gb/s to 11.32Gb/s Multi-Rate
- 50GHz ITU Grid, C-Band DWDM ILMZ transmitter + APD receiver
- Duplex LC connector
- Link distance 80km over SM fiber

Fiber Optical Transceiver



125M ~ 2.5G Dual LC SFP
220m~200km

Features

- Data Rate 125M / 155M / 622M / 1.0625G / 1.25G / 2.125G / 2.5G
- 850nm VCSEL / 1310nm FP / 1310nm DFB / 1550nm DFB transmitter + PIN / APD receiver
- Duplex LC connector
- Link distance 500m~5km over MM fiber / 5~200km over SM fiber



125M ~ 2.5G Bidi LC SFP
500m~160km

Features

- Data Rate 125M / 155M / 622M / 1.0625G / 1.25G / 2.125G / 2.5G
- 1310nm FP / 1310nm DFB / 1490nm DFB / 1550nm DFB transmitter + PIN / APD receiver
- Simplex(Bidi) LC connector
- Link distance 500m~5km over MM fiber / 2~160km over SM fiber



125M ~ 2.5G CWDM SFP
40/80/120km

Features

- Data Rate 125M / 155M / 622M / 1.0625G / 1.25G / 2.125G / 2.5G
- 1270~1610nm DFB transmitter + PIN / APD receiver
- Duplex LC connector
- Link distance 40~120km (Link Budget 18~36dB)



1b ~ 2.5G 1X9 Transceiver

Features

- Ultra Low Data Rate 1bps ~ 52Mbps
- Standard Data Rate 125M / 1.25G / 2.5G
- 850nm VCSEL / 1310nm FP / 1310nm DFB / 1550nm DFB / CWDM DFB transmitter + PIN / APD receiver
- Dual / Bidi SC, FC, ST connector
- Link distance 500m~5km over MM fiber / 2~160km over SM fiber



1G CSFP 1000BX 2CH 20km

Features

- Compliant with IEEE802.3ah 1000BASE-BX10
- Compliant with Fiber Channel 100-SM-LC-L
- Compliant with CSFP MSA Option #2
- Data Rate 1.0625Gbps (1GFC) / 1.25Gbps (GE)
- 2CH Bi-directional 1310nm FP / 1490nm DFB / 1550nm DFB transmitter + PIN receiver
- Dual Bidi LC connector
- Link distance 20km over SM fiber



125M ~ 2.5G DWDM SFP
40/80/120/160/200km

Features

- Data Rate 125M / 155M / 622M / 1.0625G / 1.25G / 2.125G / 2.5G
- 50GHz / 100GHz ITU Grid, C-Band DWDM EML transmitter + PIN / APD receiver
- Duplex LC connector
- Link distance 40~200km



10G SFP+ XG/XGS PON OLT/ONU

Features

- Compliant with ITU-T G.9807.1
- OLT transmitter: 9.953G continuous mode with 1570nm EML
- OLT receiver: 9.953G / 2.488G burst mode with 1270nm APD
- ONU transmitter: 9.953G / 2.488G burst mode with 1270nm DFB
- ONU receiver: 9.953G continuous mode with 1570nm APD
- Simplex(Bidi) SC connector
- Link distance 20km over SM fiber



EPON/GEPON SFP OLT/ONU

Features

- Compliant with IEEE 802.3ah
- Class PX20+ / PX20++
- OLT transmitter: 1.25G continuous mode with 1490nm DFB
- OLT receiver: 1.25G burst mode with 1310nm APD
- ONU transmitter: 1.25G burst mode with 1310nm FP
- ONU receiver: 1.25G continuous mode with 1490nm PIN
- Simplex(Bidi) SC connector
- Link distance 20km



GPON SFP OLT/ONU

Features

- Compliant with ITU-T G.984.2 / 984.5
- Class B+ / C+ / C++ / C+++ (+7dBm)
- OLT transmitter: 2.488G continuous mode with 1490nm DFB
- OLT receiver: 1.244G burst mode with 1310nm APD
- ONU transmitter: 1.244G burst mode with 1310nm DFB
- ONU receiver: 2.488G continuous mode with 1490nm APD
- Simplex(Bidi) SC connector
- Link distance 20km

RJ45 Copper Transceiver



10G SFP+ RJ45 Copper

Features

- Compliant with IEEE802.3an, 802.3ab and 802.3z
- Support 10GBASE-T/ 5GBASE-T/ 2.5GBASE-T/ 1000BASE-T Multi-Rate
- Auto-negotiates with other 10GBASE-T PHYs
- Auto-detect MDI/MDI-X
- Support RX_LOS function
- RJ45 connector
- 10G link distance up to 30m with Cat.6a/7, 2.5G/5G link distance up to 50m with Cat.5e, 1G link distance up to 100m with Cat.5e



1G SFP RJ45 Copper

Features

- Compliant with IEEE802.3-2002 and 802.3ab
- Auto-detect MDI/MDI-X on RJ45 port
- Compatible with 1000BASE-X and 1000BASE-T auto-negotiation
- 10/100/1000BASE-T operation in host system with SGMII interface
- Support RX_LOS function
- RJ45 connector
- Link distance up to 100m with Cat.5 UTP

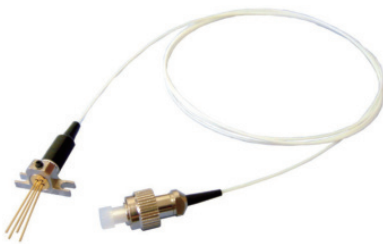


100M SFP RJ45 Copper

Features

- Compliant with IEEE802.3 and 802.3u Standard
- Auto-detect MDI/MDI-X on RJ45 port
- Compatible with 10BASE-T and 100BASE-TX auto-negotiation
- Support RX_LOS function
- RJ45 connector
- Link distance up to 100m with Cat.5 UTP

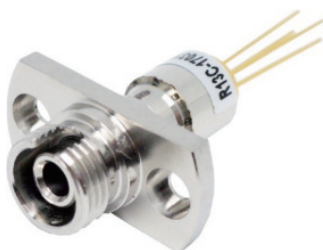
Discrete Module and parts



Fiber Pigtail Coupled LD / PD module

Features

- Data Rate 125M / 155M / 1.25G / 2.5G / 4.25G
- Transmitter Laser Diode: 850nm VCSEL / 1310nm FP / 1310nm DFB / 1550nm DFB
- Receiver Photo Diode: PIN / APD
- SC, FC, ST, LC, SMA or customized optical connector
- SM / OM1 / OM2 / OM3 / OM4 fiber pigtail with customized length



Receptacle LD / PD module

Features

- Data Rate 125M / 155M / 1.25G / 2.5G / 4.25G
- Transmitter Laser Diode: 850nm VCSEL / 1310nm FP / 1310nm DFB / 1550nm DFB
- Receiver Photo Diode: PIN / APD
- SC, FC, ST, LC, SMA or customized Receptacle connector
- SM / OM1 / OM2 / OM3 / OM4 fiber stub

Fiber Optical Equipment



100M / 1G Unmanaged Converter

Features

- Compliant with IEEE802.3 10BASE-T, 802.3u 100BASE-TX, 802.3ab 1000BASE-T and 802.3z 1000BASE-FX
- TX to FX or FX to FX (OEO)
- LFPT & DIP-Switch available
- PoE function available
- Could be installed on general 2U-14Slot Chassis
- Operating Temperature: 0 ~ 50°C



100M / 1G / 10G Unmanaged Mini Converter

Features

- Compliant with IEEE802.3 10BASE-T, 802.3u 100BASE-TX, 802.3ab 1000BASE-T and 802.3z 1000BASE-FX
- Compliant with IEEE802.3an 10GBASE-T, 802.3ae 10GBASE-SR/ LR/ER/ZR
- TX to FX or FX to FX (OEO)
- LFPT & DIP-Switch available
- Could be installed on 1U-12Slot Chassis
- Operating Temperature: 0 ~ 50°C



10G WEB-Managed Converter

Features

- Compliant with IEEE802.3an 10GBASE-T, 802.3ae 10GBASE-SR/ LR/ER/ZR
- TX to FX or FX to FX (OEO)
- OEO models support 3R function (Re-amplification, Re-shaping and Re-clocking)
- XFP / SFP+ for 10G optical port
- WEB Interface for local management
- Operating Temperature: 0 ~ 50°C



100M~40G Managed Multi-Service Converter Platform

Features

- 2U-16Slot / 1U-8Slot / 1U-4Slot / 2-Slot Enclosure / Standalone 1-Slot case.
- Data Rate 100M / 1G / 2.5G / 4.25G / 10G / 40G
- OEO models support 3R function (Re-amplification, Re-shaping and Re-clocking)
- 1X9 / SFP for 100M, 1G optical port
- XFP / SFP+ for 10G optical port
- Support Remote management
- Support CWDM / DWDM MUX-DEMUX card up to 8 ports.
- Operating Temperature: 0 ~ 60°C



100M / 1G Unmanaged Fiber Switch

Features

- Compliant with IEEE802.3 10BASE-T, 802.3u 100BASE-TX, 802.3ab 1000BASE-T and 802.3z 1000BASE-FX
- MAX 8 Optical SFP / Electrical RJ45 port
- 1X9 SC, FC, ST Optical port available
- PoE function available
- Desktop package
- IP20 Metal Case protection
- Operating Temperature: 0 ~ 50°C



100M / 1G Industrial Fiber Switch

Features

- Compliant with IEEE802.3 10BASE-T, 802.3u 100BASE-TX, 802.3ab 1000BASE-T and 802.3z 1000BASE-FX
- Unmanaged / Managed
- MAX 24 Optical SFP / Electrical RJ45 port
- 1X9 SC, FC, ST Optical port available
- PoE function available
- 1U Rack / Vertical DIN-Rail package
- IP40 Metal Case protection
- Operating Temperature: -40 ~ +75°C

Cable and Passive Component



DAC (Direct Attached Cable)

Features

- Data Rate 10G / 25G / 40G / 56G / 100G / 200G / 400G
- Compliant with SFP+ / SFP28 / SFP56 / QSFP+ / QSFP28 / QSFP56 / QSFP-DD / OSFP MSA
- 10G: Up to Passive 7M / Active 12M
- 25G: Up to Passive 5M
- 40G: Up to Passive 5M / Active 12M
- 56G(FDR 14Gx4): Up to Passive 5M
- 100G: Up to Passive 5M
- 200G / 400G: Up to Passive 3M



AOC (Active Optical Cable)

Features

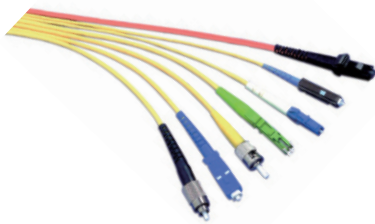
- Data Rate 10G / 25G / 40G / 56G / 100G / 200G / 400G
- Compliant with SFP+ / SFP28 / SFP56 / QSFP+ / QSFP28 / QSFP56 / QSFP-DD / OSFP MSA
- 10G / 25G / 40G / 56G: Up to OM3 / OM4 100m
- 100G / 200G / 400G: Up to OM3 70m / OM4 100m



MPO Patch-cord (Indoor)

Features

- 8, 12, 16, 24 Fiber counts available
- SM / OM1 / OM2 / OM3 / OM4 fiber
- Fiber Configuration Type-A / B / C
- US Conec MTP connector available
- Low Loss (Elite) MPO connector available
- Round / Ribbon cable structure
- LSZH / OFNR / OFNP cable jacket
- Indoor deployment especially for Data Center



General Patch-cord (Indoor)

Features

- SC, FC, ST, LC, MU, E2000, MTRJ... Connectors
- SM / OM1 / OM2 / OM3 / OM4 fiber
- Cable Diameter: Bare Fiber / 0.9 / 1.6 / 1.8 / 2.0 / 3.0mm
- Simplex / Duplex / Round Duplex
- PVC / LSZH / OFNR / OFNP cable jacket
- Indoor deployment



Mini Distribution / Distribution / Breakout Cable (Indoor)

Features

- 4~96 or more Fiber counts available
- SM / OM1 / OM2 / OM3 / OM4 fiber
- Compact Size of Cable Diameter
- PVC, LSZH, OFNR, OFNP cable jacket
- Indoor deployment



Armored Patch-cord / Armored Breakout Cable (Indoor)

Features

- 1~24 Fiber counts available
- SM / OM1 / OM2 / OM3 / OM4 fiber
- Steel / Aluminum tape armored inside outer PVC / LSZH jacket
- High tensile strength, pressure resistance and re-twist resistance
- Resistance of Flame and rodent biting
- Indoor underground and critical environment deployment



Armored Patch-cord / Armored Breakout Cable (Outdoor)

Features

- 1~24 Fiber counts available
- SM / OM1 / OM2 / OM3 / OM4 fiber
- Steel / Aluminum tape armored inside outer TPU jacket
- High tensile strength, pressure resistance and re-twist resistance
- Resistance of Flame and rodent biting
- Outdoor deployment



FTTA Waterproof Cable for Mobile Base Station (Outdoor)

Features

- 1~4 Fiber counts available
- SM / OM1 / OM2 / OM3 / OM4 fiber
- CPRI / NSN / FULLAXS / PDLC / ODVA / ODC Connector
- Steel / Aluminum tape armored available inside outer LSZH / TPU jacket
- High tensile strength, pressure resistance and re-twist resistance
- Resistance of Flame and rodent biting (for armored type)
- Outdoor deployment for the link between BBU / RRU / AAU / CU / DU



Military Tactical Waterproof Cable (Outdoor)

Features

- 2~12 Fiber counts available
- SM / OM1 / OM2 / OM3 / OM4 fiber
- Spiral Steel Tube inside outer TPU jacket
- IP68 Military Tactical Waterproof Connector
- High tensile strength, pressure resistance and re-twist resistance
- Resistance of Flame and rodent biting
- Portable Cable Reel available
- Outdoor deployment for Military or Critical application

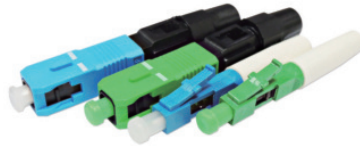
Cable and Passive Component



FDB (Fiber Distribution Box)
/ ODF (Optical Distribution Frame)

Features

- 8~120 Ports with SC / FC / ST / LC / or Customized Adaptor
- Rack-Mount / Wall-Mount
- Aluminum / SPCC Plate
- Anti-Rust paint coating
- Sliding Rail / Sliding Splice Tray available
- Cabling and Fusion Pigtail, Accessories available



QAC (Quick Assembly Connector)

Features

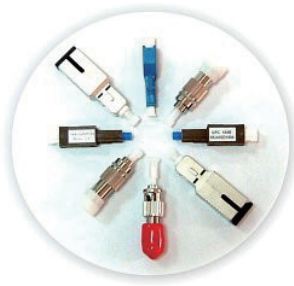
- SC/UPC, SC/APC, FC/UPC, FC/APC, LC/UPC, LC/APC Connector
- Pre-Embedded \ Fusion \ Straight Through type
- SC Connector Length 50~60mm
- Optical Insertion Loss $\leq 0.3\text{dB}$, Optical Return Loss $\geq 50\text{dB}$
- Durability $< 0.2\text{dB}$ change after 500 times matting
- Tensile Strength $> 30\text{N}$



PLC / FBT Splitter

Features

- Compliant with GR-1209-CORE & GR-1221-CORE
- G.657A1 / G.657A2 / G.657B2 Fiber
- 1x2 to 2x128 Configuration
- Wavelength range 1260nm ~ 1650nm / Dual Window / Triple Window / MMF
- Loss Uniformity $< 2.5\text{dB}$, PDL $< 0.4\text{dB}$
- Steel Tube / Metal Box / Plastic Box / LGX Box / 1U Rack packages



Attenuator

Features

- Compliant with GR-910-CORE / JIS C5920
- SM / OM1 / OM2 / OM3 / OM4 Fiber
- 0 ~ 40dB Attenuation
- Fixed or Variable Attenuation
- Male to Female / Female to Female
- UPC / APC physical contact polishing



Adaptor

Features

- SC, FC, ST, LC, MU, E2000, MPO... various type
- Simplex / Duplex / Quad
- PC / APC
- Plastic / Meta Housing
- Female to Female / Female to Male
- Big (2.5mm) to Small (1.25mm) Hybrid available
- Different Connector Hybrid available
- MAX Insertion Loss 0.2~0.5dB



CWDM MUX / DEMUX / OADM

Features

- 20nm channel spacing
- 18 Channels 1270nm ~ 1610nm
- Average Pair Loss configuration
- Low Insertion Loss & PDL
- High Isolation: Adjacent $> 30\text{dB}$ / Non-adjacent $> 45\text{dB}$
- Monitor / Upgrade / Express port available
- Plastic Box / Metal Box / LGX Box / 1U Rack packages



DWDM MUX / DEMUX / OADM

Features

- TTF / TAWG / AAWG techniques
- 200GHz / 100GHz / 50GHz channel spacing
- MAX 96 Channels in C-Band wavelength
- Average Pair Loss configuration
- Low Insertion Loss & PDL
- High Isolation: Adjacent $> 25\text{dB}$ / Non-adjacent $> 30\text{dB}$
- Monitor / Upgrade / Express port available
- Plastic Box / Metal Box / LGX Box / 1U Rack packages



LWDM MUX / DEMUX / OADM

Features

- 800GHz channel spacing
- 12 Channels 1269.23nm ~ 1318.35nm
- Average Pair Loss configuration
- Low Insertion Loss & PDL
- High Isolation: Adjacent $> 25\text{dB}$ / Non-adjacent $> 35\text{dB}$
- Monitor / Upgrade / Express port available
- Plastic Box / Metal Box / LGX Box / 1U Rack packages



Fiber Clean Tools

Features

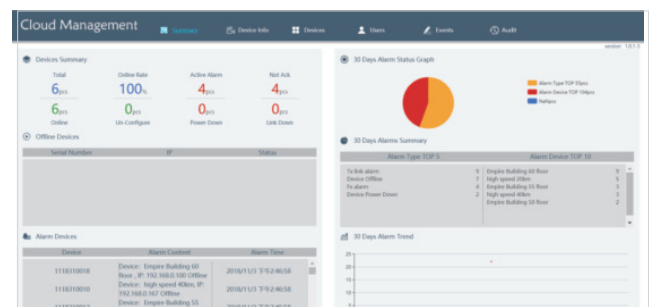
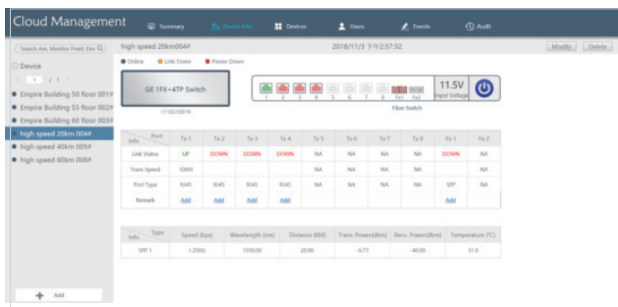
- 2.5mm Clean Pen / Stick for SC, FC, ST, E2000 Connector
- 1.25mm Clean Pen / Stick for LC, MU Connector
- 500~800+ times use for Clean Pen
- MPO Cleaner for MPO Connector
- Clean Wipe / Paper / Tape for various Fiber End Face clean

Cloud Managed Fiber Converter / Switch

Cloud Managed Fiber Converter / Switch



- Accurate positioning equipment failure.
- Fiber port 100M and 1000M Auto-negotiation.
- Manage up to thousands of nodes with friendly GUI.
- Real-Time monitoring and alarm.
- Support Standalone & Centralized management and remote upgrade.
- Support PoE up to 30W each port (802.3af/at) and reach up to 250m.
- The Cloud platform unify manage all smart devices of Ficer products.



(Management Graphical User Interface)

OTN DWDM Transmission Platform

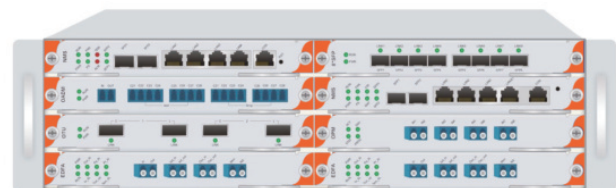
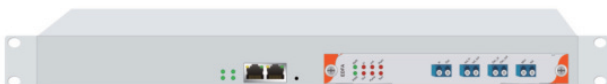


Features

- Low noise figure : typical 5dB
- Gain Flattening Filters (GFF) assure flat Gain (<1dB variance) over the entire amplified band
- Multiple operating modes : AGC, APC, ACC
- High performance transient response control to ensure Power, Gain stable without affecting existing signal
- Support customized saturated Output Power range 13 ~ 24dBm
- Support customized Gain variety range 8 ~ 40dB
- Support Red / Blue port for single-fiber DWDM transmission system
- Support Midstage access for insertion of a DCM or OADM unit without it's inherent loss
- Optional OSC management channel for remote management
- MON own monitoring port, on-line monitoring optical power and OSNR
- Support SNMP, Web, Console management
- Support 1, 4, 8, 16 slot chassis for different capacity requirement

Application

- Metro DWDM distance extension
- Single wavelength distance extension
- CATV network system
- Long-Haul transmission system





Ficer Technology Co. Ltd

Tel: +886-2-28983830

Fax: +886-2-28983840

Email: Sales@Ficer.com

Web: www.Ficer.com

2F., No.138, Daye Rd., Beitou Dist.,
Taipei City 11268, Taiwan (R.O.C)

